



DataGrams



Proven, Field-Tested Network Security Strategies To Help Our Clients Make Confident, Real-Time Cybersecurity Decisions.

WHAT'S NEW?



Happy Anniversary to Engineer **Adam Frielink!** 27 Years with Data-Link

Happy Birthday to Senior Consultant **Mike Lamczyk** on July 1st!



Welcome **Angela Birchfield!** our new Director of Operations abirchfield@datalinkmsp.com

How CEOs Are Navigating The Great CISO Resignation

Industry experts predict that 2023 will see the Great Resignation spread to the Chief Information Security Officer (CISO). In a recent poll, 32-44% of CISOs were either considering or open to leaving their jobs, mainly due to job stresses and the impact on work-life balance.



“The CISO is the leader of the frontline of defense against threat actors”, said Rick Crandall, chairman of the National Cybersecurity Center’s Cyber Committee, which recently made a call-to-action to reverse what some are calling the Great CISO Resignation. “Like any organization”, Crandall continued, “without a leader, important things don’t get managed, motivated, measured and corrected.”

CISOs face too much firefighting, excessive expectations

Top reasons for CISO dissatisfaction has been recently reported to be due to a lack of work-life balance and excessive “firefighting” rather than focusing on strategic issues. Many are struggling to keep up to date with the new frameworks and models (such as multi-factor authentication and zero trust) while others say keeping their team’s skill levels up is a “serious challenge”.

CISOs are fighting for their lives as they face “excessive expectations”. In one recent survey, 100% of respondents said they needed additional resources to adequately cope with current IT security challenges.

Then there is the general lack of qualified team members to begin with. Over an eight-year period, the number of unfilled cybersecurity jobs grew by 350%, from one million positions in 2013 to 3.5 million in 2021. That number is expected to hold out until 2025.

If your internal IT department is overwhelmed, unable to keep up and facing projects they cannot handle on their own, putting you at risk for a significant, expensive IT failure, WE CAN HELP...

WHAT'S INSIDE:

FREE REPORT: The CEO/CFO’s Guide To Co-Managed IT.....pg 1

Hacked! Grim SMB tales..... pg 2

Canva Keyboard Shortcuts.....pg 2

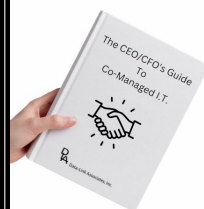
Featured Elevate Company Culture with IMEC’s DEI Journey Map...pg 3

Should you password protect the Guest WiFi?pg 4

Featured Crossword puzzle.....pg 4



THERE IS NO CLOUD
IT'S JUST SOMEONE ELSE'S COMPUTER



FREE REPORT: The CEO/CFO’s Guide To Co-Managed I.T.

Co-MIT is your organization’s best chance to survive this cyber-climate.

DOWNLOAD this FREE REPORT at datalinkmsp.com/partnership



This monthly publication provided courtesy of Richard Frielink, Founder & President of Data-Link Associates



Our Mission

To provide IT solutions and services that allow our clients to succeed in an ever changing and challenging business environment.

A Maine-based construction firm lost about \$588,000 to a cyber attack using a Trojan added to one of their systems. This allowed them to capture online banking credentials and make a series of ACH transfers from the company’s accounts.

The bank was able to reclaim some of it, cutting the firm’s net loss to \$345,445. The firm also had to pay interest on hundreds of thousands of dollars in overdraft loans from the bank.

The firm eventually sued the bank for failing to provide a “commercially reasonable” security process for ACH transfers. The firm lost but later won on appeal. Some have called the case a victory for victims of small business cyber attacks.

EMERGENCY

(630) 406-8969



10:30pm on a Saturday, an employee received an email from a hacker with a threat. Confirmation from their IT department said it was a legitimate message and the company’s network was under attack.

The company via their insurance provider negotiated with the hackers all day Sunday. The company agreed to pay \$150,000 of the \$400,000 originally requested in Bitcoin but no one knew how to send it. They contacted a Bitcoin broker that, for a fee, handled their transaction.

In this case, there was no before, during and after plan in case of a cyberattack.

Coming up in the next issue:

- ◆ 5 Step Guide To A Safe Network
- ◆ How To Subscribe To DLA’s Weekly IT Security Tips

Are you new here?

Schedule a complimentary

10-Minute Discovery Call with an Engineer!

Datalinkmsp.com/discoverycall



Keyboard Shortcuts

Canva has become THE leader in social media, marketing collateral and online presentation creation! (ICYW, we use Publisher for DataGrams)

If you or someone you know spends time on Canva, be sure to share these keyboard shortcuts with them to make the process smoother, quicker and less frustrating. This productivity hack quickly becomes second-nature.

- UNDO: Ctrl + Z
- REDO: Ctrl + Y
- COPY: Ctrl + C
- PASTE: Ctrl + V
- SELECT ALL: Ctrl + A (select all text within a box)

Designing is a long, arduous process, even when afforded tools for neophytes, like Canva.

Happy designing! - CWP

Elevate Company Culture

with IMEC's Diversity, Equity and Inclusion (DEI) Journey Map Illinois Manufacturing Excellence Center (IMEC) – imec.org

If you don't know IMEC, you should! The Illinois Manufacturing Excellence Center (IMEC) is a team of improvement specialists dedicated to providing manufacturers in Illinois with the tools and techniques to excel and compete globally.

The experienced hands-on team at IMEC works closely with its clients to plan critical business improvements in all areas of their organization from: leading the company, planning for success, growing their business, improving their operations, focusing on their people and deciding with data.

The IMEC Diversity, Equity and Inclusion (DEI) Journey Map is designed to guide small to mid-size manufacturers to action.

The experienced team at IMEC is positioned to assist with improvements in diversity and inclusion which contribute to your business performance, responsiveness to customer needs, and employee collaboration and loyalty.

Use the QR Code to **download your copy of the DEI Journey Map** so you can begin creating a compelling company culture.

If you have questions about the DEI Journey Map or want to learn more about how IMEC can help your Illinois manufacturing business, reach out through

(888) 806-4632 or info@imec.org

Access the IMEC Diversity, Equity and Inclusion (DEI) Journey Map



"The work of IMEC, its partners, and the hard-working businesses in the state will mean that 'made in Illinois' is not a thing of the past but a thing of the future."

Senator Dick Durbin

2022 Manufacturing Impacts

1,867

Companies Assisted

4,471

Jobs Created + Retained

\$646,455,000

Aggregate Impact



Northern Illinois University



Southern Illinois University



CHICAGO DEPARTMENT OF PLANNING & DEVELOPMENT



Illinois Department of Commerce & Economic Opportunity



recognizes the value of a strong team and partnerships to bring their mission to life. IMEC key partners serve vital roles to help our state's competitiveness.

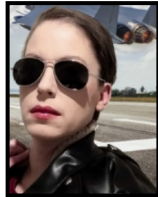
Thank You For Calling!

Thank you to those who called in a referral this month, sent topic requests for the Weekly IT Tip emails, requested more information or sat for an appointment. We appreciate you!

Cyber Wingman’s Rant:

Is it overkill to password protect the Guest WiFi ?

If you’re a guest somewhere, it feels inconvenient, almost rude, to need to enter a password to access the WiFi in a place you are patronizing.



In some places your phone will automatically connect without a password and the connection is smooth as not-your-grandma’s gravy.

Is it unnecessary overkill to password-protect your Guest WiFi?

The answer is no, **always password protect the Guest WiFi** at your business and expect Guest WiFis you encounter in hotels/waiting rooms to be password protected, or it’s best not to connect.

Using a password means your information is encrypted over the WiFi so no other guest on the same WiFi can access your data and non-guests cannot access the network.

It’s also a GREAT idea to have a Guest WiFi for your home for your kids and house-guests so they are not on the same network you use to pay your mortgage and file your taxes.

Check out my LinkedIn post from June 10th that talks about the WiFi Pineapple that hordes of hackers are using to capture your data.

It’s posted on Data-Link’s page which can be accessed through my LinkedIn profile, **/cyberwingman**. See you there!

Licensed for commercial print use by crosswordsite.com

1	2	3	4	5			6	7	8	
9					10		11			
12							13			
				14		15				
16	17	18	19					20	21	
22						23				
24					25					
		26								
27	28				29		30	31	32	33
34					35					
36						37				

Answers at dlaic.com/crossword

Across

- 1 Spud source
- 6 Short boxing punch
- 9 Roomy autos
- 11 Saintly symbol
- 12 Accident
- 13 "I suppose"
- 14 Match
- 16 Turnpike convenience
- 22 Solo numbers
- 23 Like certain organs
- 24 Multiply rapidly
- 26 Teacher
- 27 Gratis
- 29 Onetime Disney chief
- 34 Obstructs
- 35 How bodysuits fit
- 36 They go with outs
- 37 Pixie

Down

- 1 Doctrine
- 2 Agnus or Opus follower
- 3 Sales aids, for short
- 4 "Baloney!"
- 5 Stopping by
- 6 Capital of Indonesia
- 7 Cotton state
- 8 Early man?
- 10 Building detail, briefly
- 11 Type of balloon
- 15 Breaking off
- 16 Plant juice
- 17 Sin
- 18 Unruly mob
- 19 Appraises
- 20 Consume
- 21 Malt beverage
- 25 Hatfields and McCoys
- 27 Crime fighters